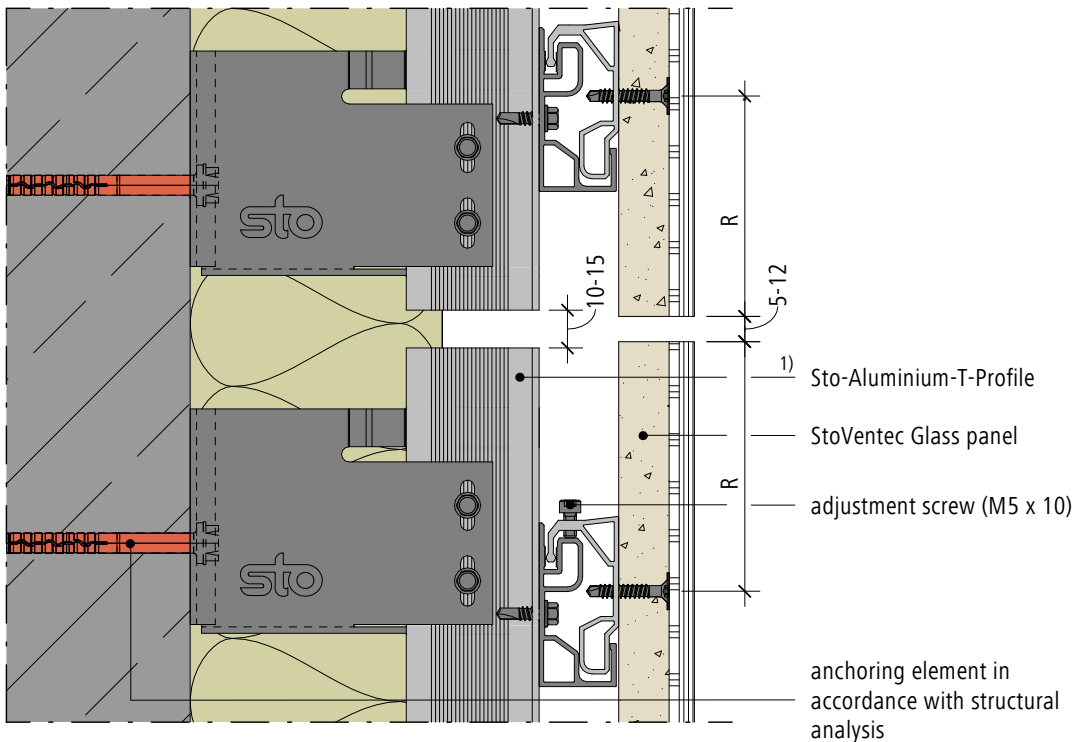
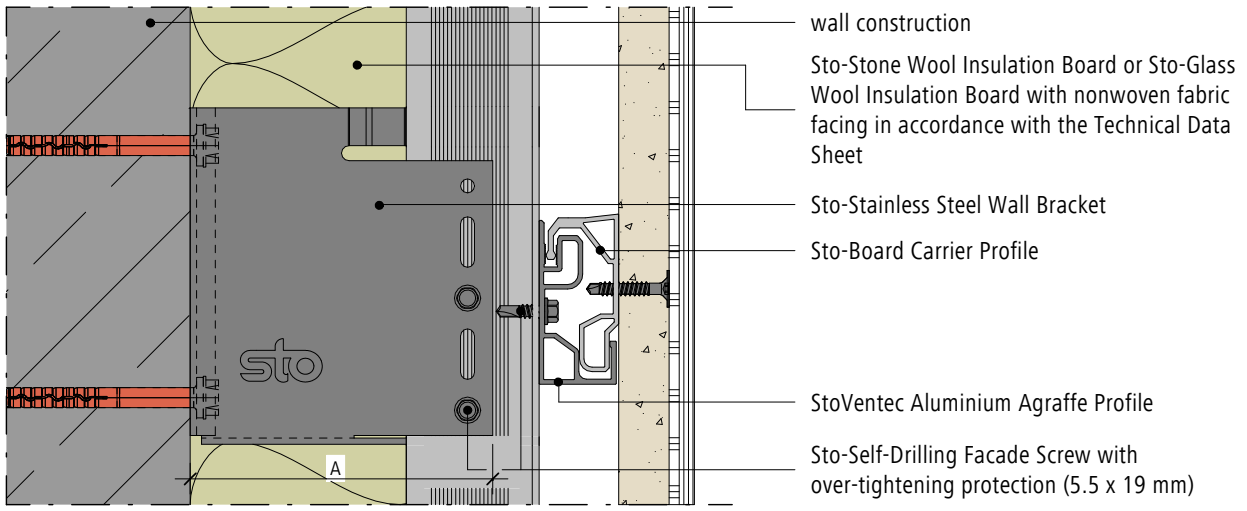


rainscreen cladding facade System build-up (vertical section): System build-up of a facade	StoVentec Glass	Rev. no. 2017-06-01 Sto-HQ-EN
	VGP-SAR-0013	



A	length of the wall bracket (see VGP-SAR-0015)
R	edge distance of the board carrier profile in accordance with technical approval, structural analysis, and/or project-specific planning

1) Arrange the Sto-Aluminium-T-Profiles so that the joint between the Sto-Aluminium-T-Profiles lies in the area of the joint between the StoVentec Glass panels.

Note: This drawing is a general, non-binding planning suggestion which depicts the execution only schematically, but is no substitute for the required working and detail drawing as well as the installation plans. The applicator/planner/customer is independently responsible for determining the suitability, completeness and dimensions of the product for the particular construction project. Neighbouring works are described only schematically. All specifications and assumptions must be adjusted or agreed in the light of local conditions. Compliance with the technical specifications contained in the Technical Data Sheets, application guidelines, and system approvals is mandatory.